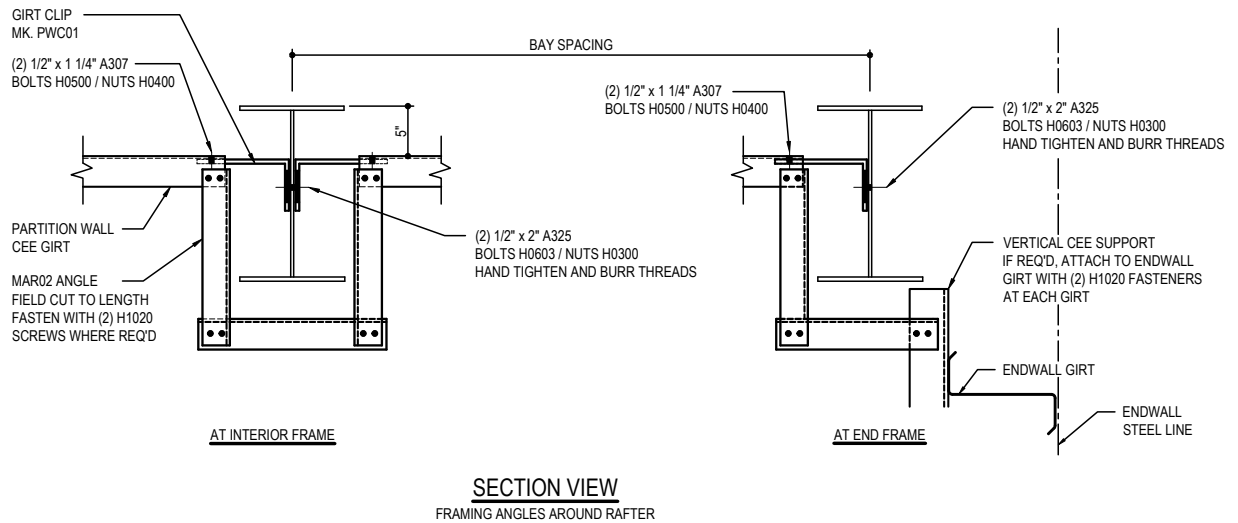
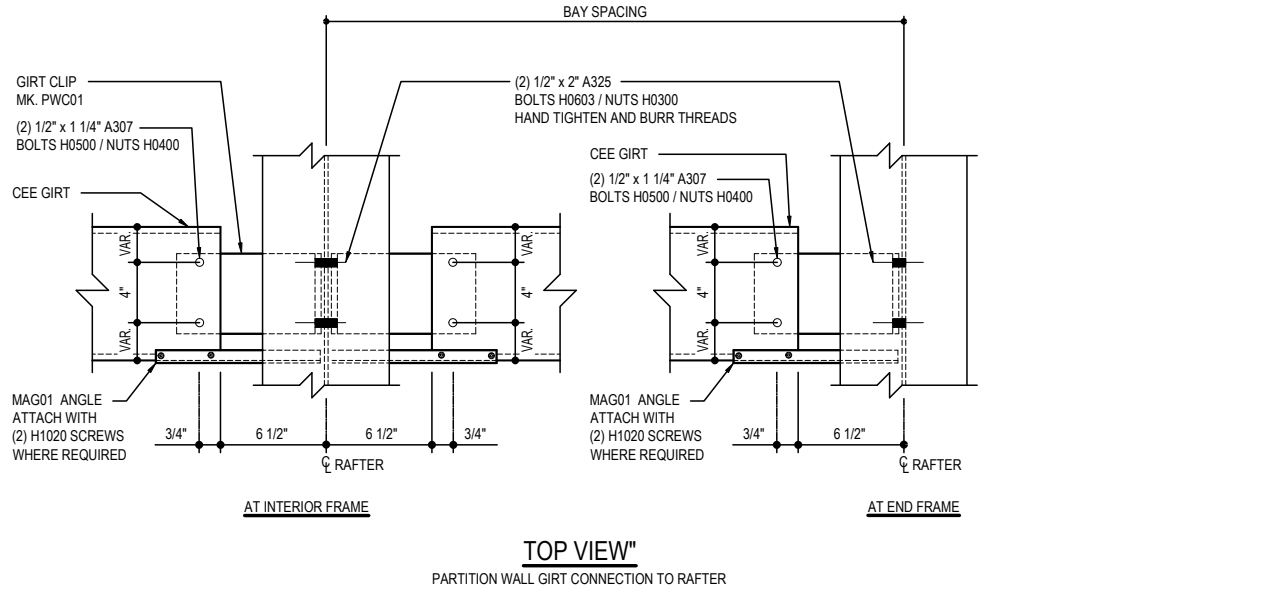


PARTITION WALL FRAMING

- CH0010 - LONG. PARTITION WALL CEE GIRT TO RIGID FRAME CONNECTION
 - CH0020 - LONG. PARTITION COLUMN TO RAFTER CONNECTION
 - CH0030 - TRANS. PARTITION COLUMN TO SUPPORT CHANNEL AT MID-BAY
 - CH0040 - PARTITION WALL GIRT TERM. TO COLUMN (BYPASS EXT. WALL)
 - CH0050 - PARTITION WALL GIRT TERM. TO COLUMN (FLUSH/INSET EXT. WALL)
 - CH0060 - ALT. PARTITION WALL GIRT TERMINATION INTO COLUMN
 - CH0070 - PARTITION COLUMN TO FINISHED FLOOR
 - CH0080 - PARTITION WALL GIRT CONN. TO COLD-FORMED PARTITION COLUMN
 - CH0090 - TRANS.VERSE PARTITION COLUMN TO RAFTER CONNECTION
 - CH0100 - PARTITION COLUMN TO TOP CEE GIRT CONNECTION
 - CH0110 - JOIST STRUT CONNECTION TO PARTITION COLUMN
-

CH0010 - LONGITUDINAL PARTITION WALL CEE GIRT TO RIGID FRAME CONNECTION

[Download the DWG file by clicking here.](#)



LONGITUDINAL PARTITION WALL CEE GIRT TO RIGID FRAME CONNECTION

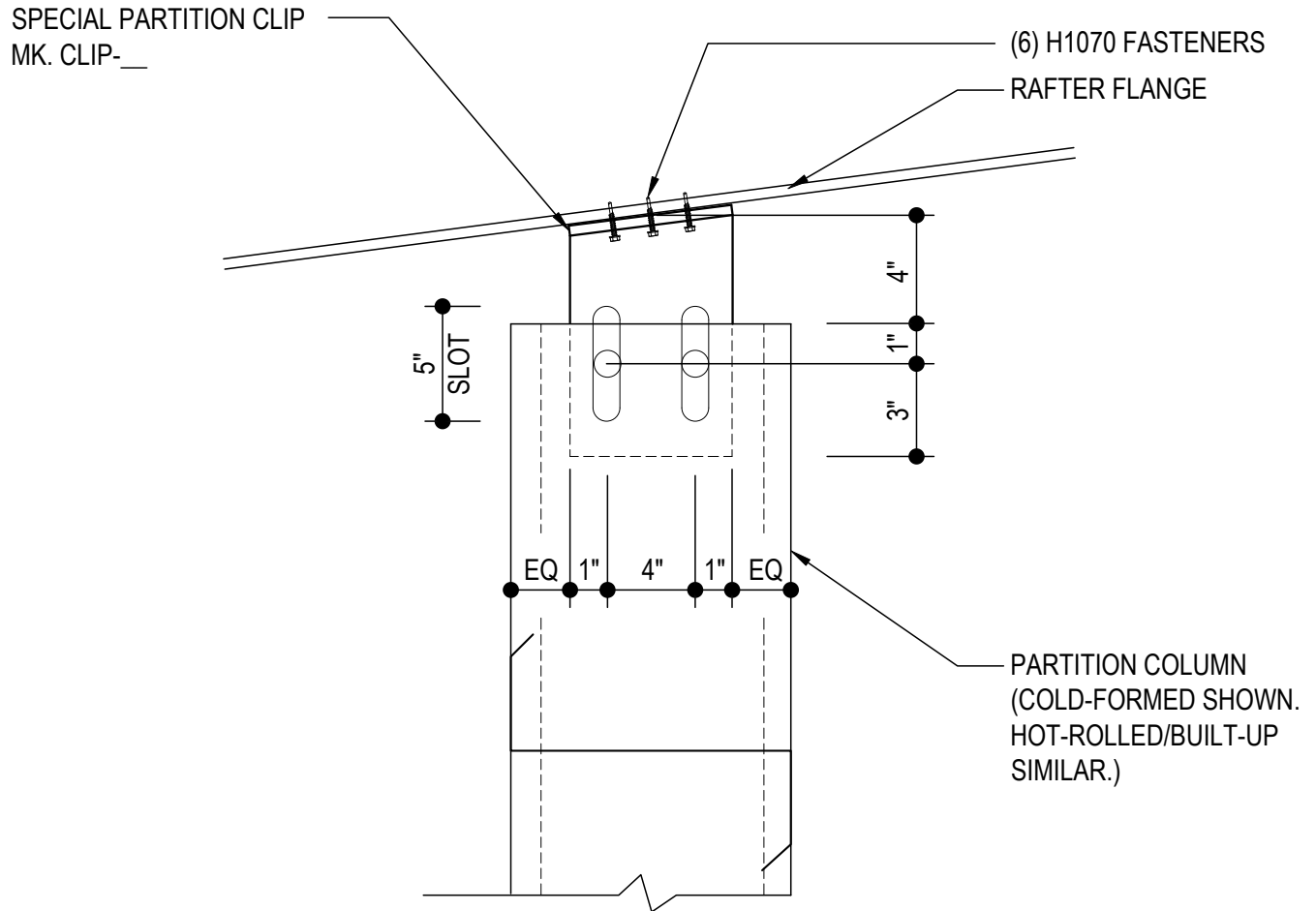
REFERENCE STANDARD WASHER DETAIL FOR TYPICAL WASHER REQUIREMENTS.

CH0010

Detailer Notes:

CH0020 - LONGITUDINAL PARTITION COLUMN TO RAFTER CONNECTION

[Download the DWG file by clicking here.](#)



**LONGITUDINAL PARTITION COLUMN TO
RAFTER CONNECTION**

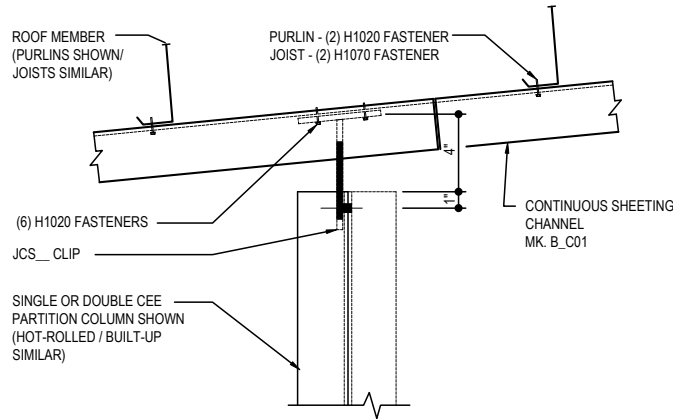
NOTE: USE (2) 1/2" X 2" A325 BOLTS H0603 / NUTS H0300
HAND TIGHTEN AND BURR THREADS.
REFERENCE STANDARD WASHER DETAIL FOR TYPICAL WASHER REQUIREMENTS.

CH0020

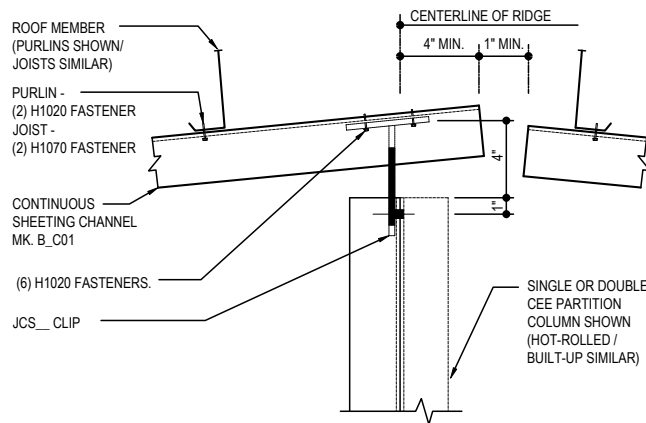
Detailer Notes:

CH0030 - TRANSVERSE PARTITION COLUMN TO SUPPORT CHANNEL AT MID-BAY

[Download the DWG file by clicking here.](#)



PARTITION COLUMN CONNECTION TO SUPPORT CEE BETWEEN PURLINS



PARTITION COLUMN CONNECTION TO SUPPORT CEE AT RIDGE

**TRANSVERSE PARTITION COLUMN TO
SUPPORT CHANNEL AT MID-BAY**

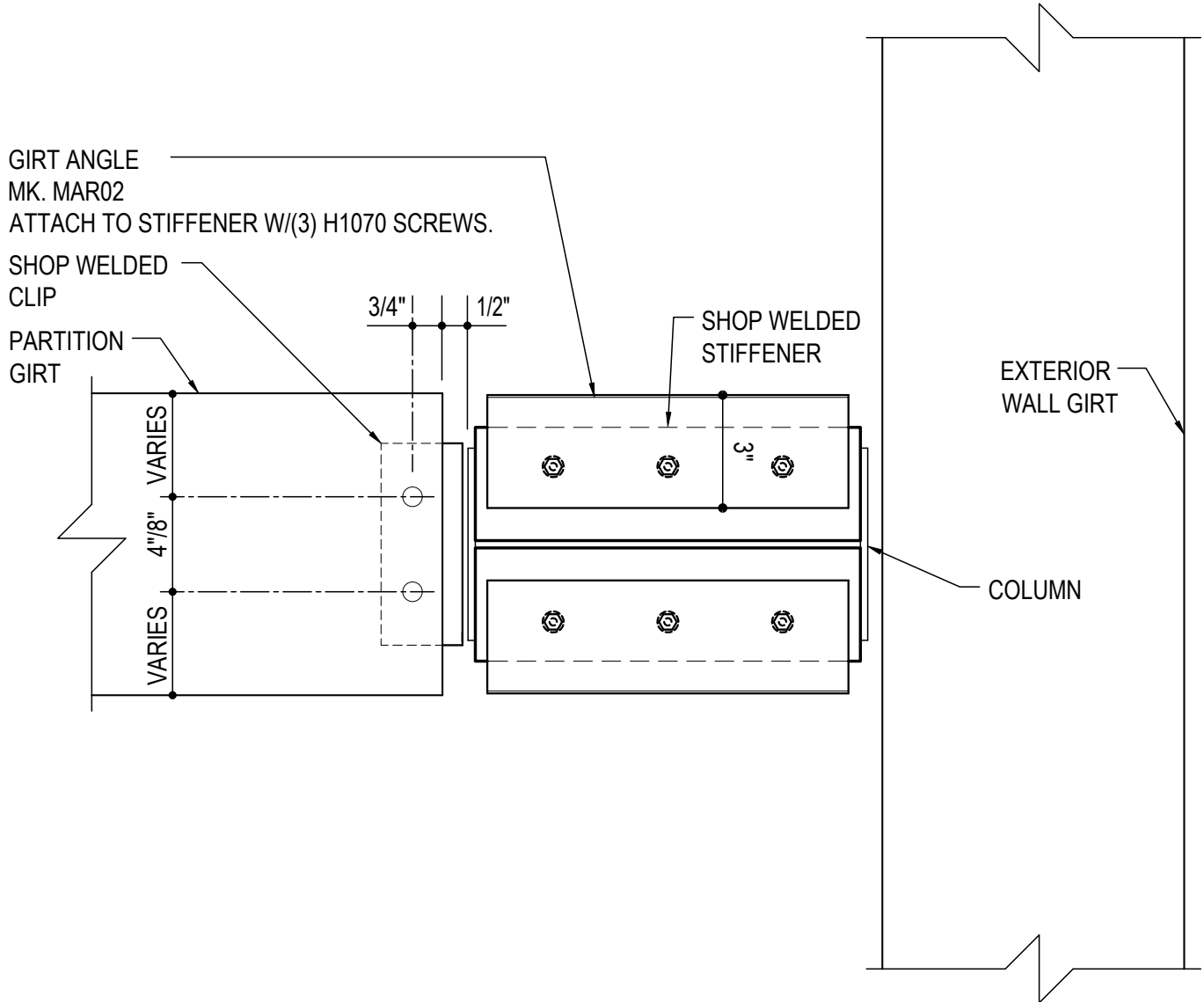
NOTE: USE (2) 1/2" X 2" A325 BOLTS H0603 / NUTS H0300.
HAND TIGHTEN AND BURR THREADS.
REFERENCE STANDARD WASHER DETAIL FOR TYPICAL WASHER REQUIREMENTS.

CH0030

Detailer Notes:

CH0040 - PARTITION WALL GIRT TERMINATION TO COLUMN (BYPASS EXTERIOR WALL)

[Download the DWG file by clicking here.](#)



PARTITION WALL GIRT TERMINATION TO COLUMN (BYPASS EXTERIOR WALL)

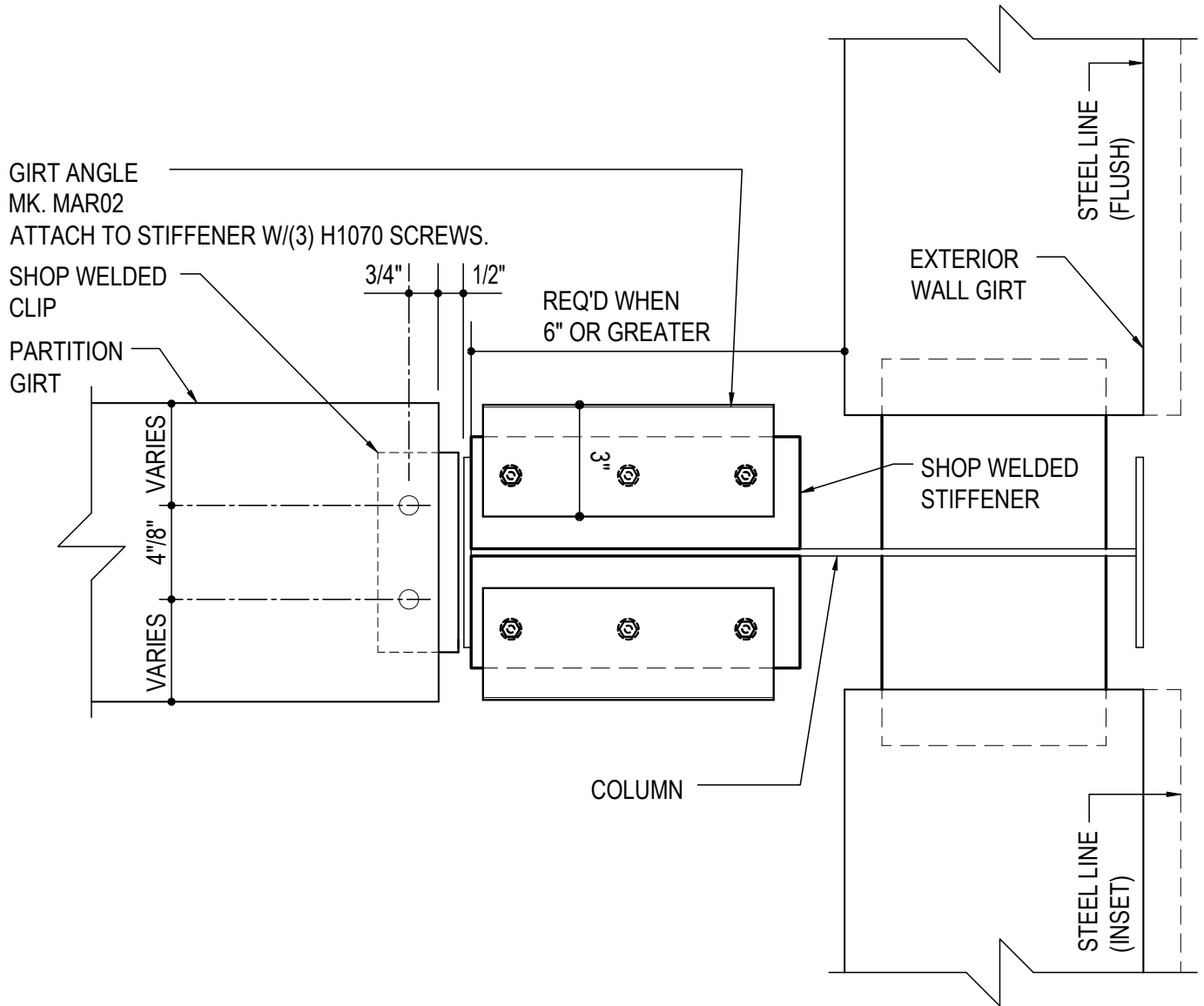
NOTE: USE (2) 1/2" X 1 1/4" A307 BOLTS H0500 / NUTS H0400

CH0040

Detailer Notes:

CH0050 - PARTITION WALL GIRT TERMINATION TO COLUMN (FLUSH/INSET EXTERIOR WALL)

[Download the DWG file by clicking here.](#)



PARTITION WALL GIRT TERMINATION TO COLUMN (FLUSH/INSET EXTERIOR WALL)

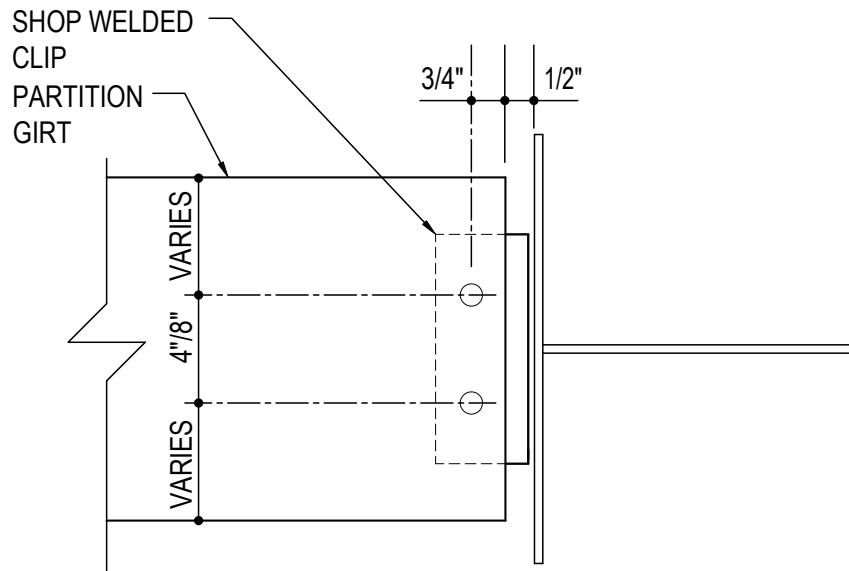
NOTE: USE (2) 1/2" X 1 1/4" A307 BOLTS H0500 / NUTS H0400

CH0050

Detailer Notes:

CH0060 - ALT. PARTITION WALL GIRT TERMINATION INTO COLUMN

[Download the DWG file by clicking here.](#)



ALT. PARTITION WALL GIRT TERMINATION INTO COLUMN

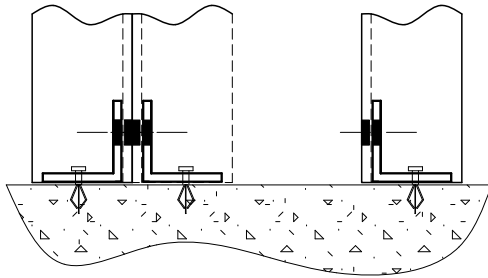
NOTE: USE (2) 1/2" X 1 1/4" A307 BOLTS H0500 / NUTS H0400

CH0060

Detailer Notes:

CH0070 - PARTITION COLUMN TO FINISHED FLOOR

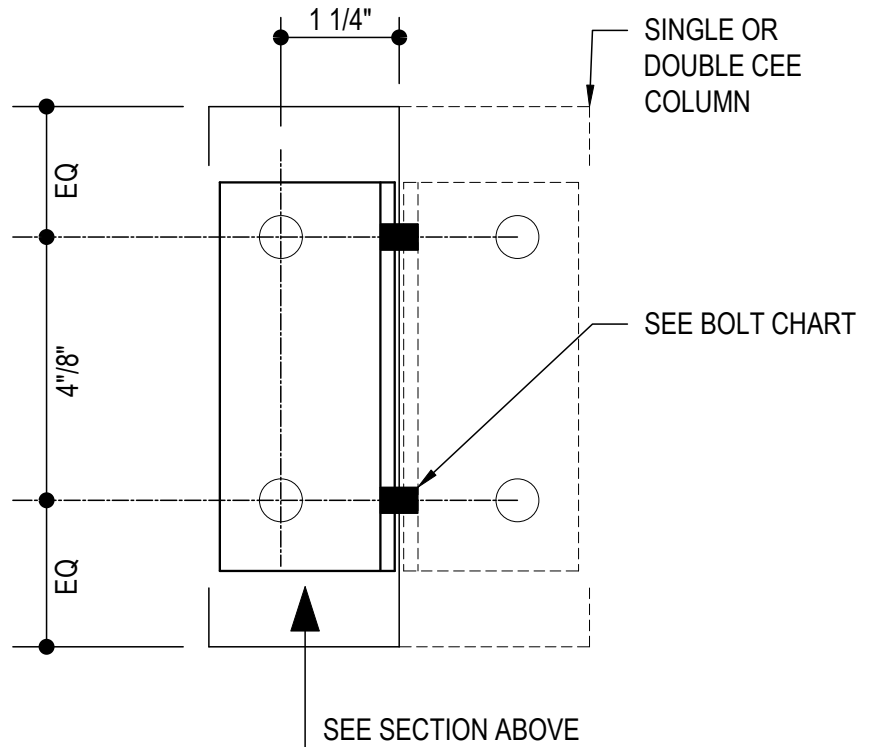
[Download the DWG file by clicking here.](#)



BOLT CHART		
COLUMN TYPE	BOLT	NUT
SINGLE CEE	(2) H0500	(2) H0400
DOUBLE CEE	(2) H0603	(2) H0300
H.R. / B.U.	(2) H0603	(2) H0300

COLUMN TO FINISHED FLOOR CLIP	
CLIP MK.	CEE SIZE
HCJ01	8" / 9 1/2"
HCJ02	12"

NOTE: INSTALL CLIPS ON COLUMN BEFORE STANDING COLUMN.
(ATTACHMENT TO SLAB BY OTHERS.)



PARTITION COLUMN TO FINISHED FLOOR

H0500 BOLT = 1/2" x 1 1/4" A307

H0603 BOLT = 1/2" x 2" A325

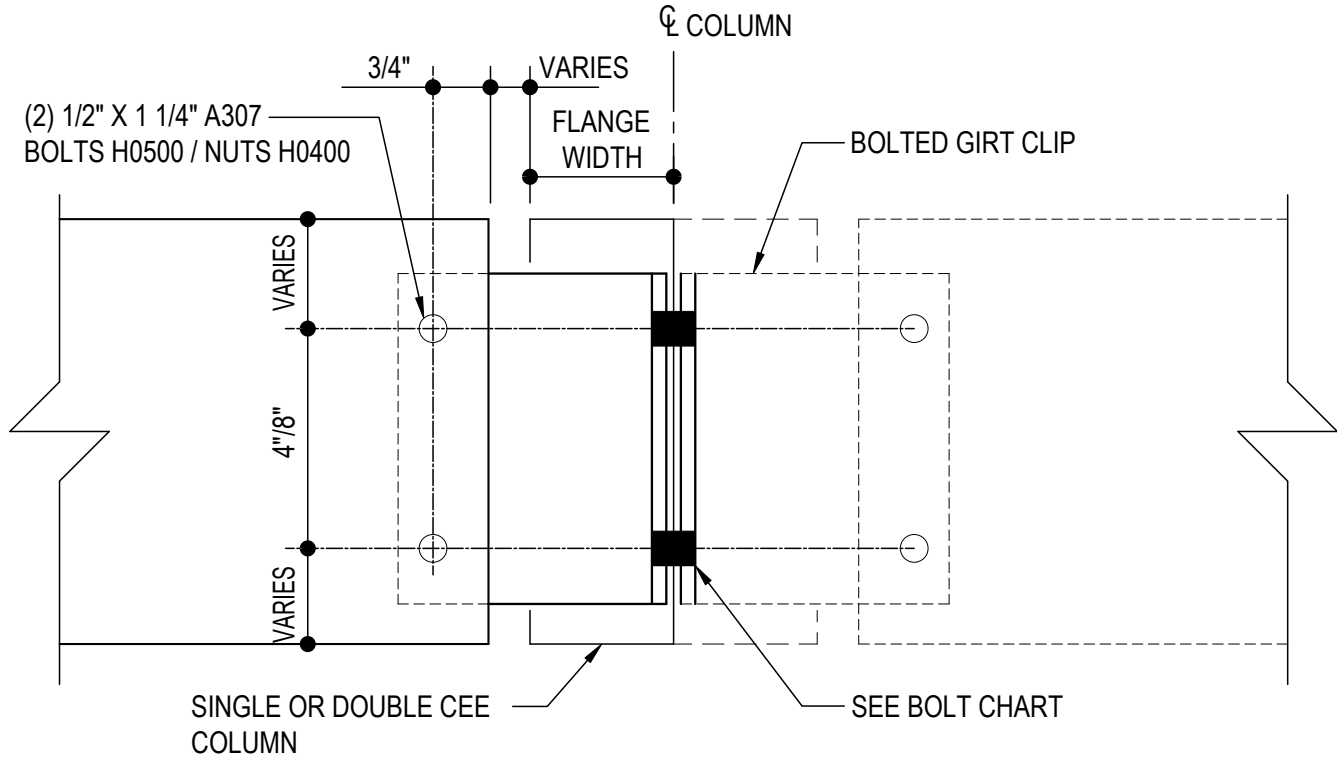
REFERENCE STANDARD WASHER DETAIL FOR TYPICAL WASHER REQUIREMENTS.

CH0070

Detailer Notes:

CH0080 - PARTITION WALL GIRT CONNECTION TO COLD-FORMED PARTITION COLUMN

[Download the DWG file by clicking here.](#)



BOLTED GIRT CLIPS		
CLIP MK.	COLUMN SIZE/SHAPE	FLANGE WIDTH
FOC94	8" / 9 1/2" CEE	2.5" / 3"
FOC95	12" "S"	3.63"
FOC96	8" / 9 1/2" "S"	3.78" / 3.63"
NOTE: INSTALL CLIPS ON COLUMN BEFORE STANDING COLUMN. USE LEVEL TO ALIGN GIRTS ADJUST CLIP AS REQUIRED.		

BOLT CHART		
COLUMN TYPE	BOLT	NUT
SINGLE CEE	(2) H0500	(2) H0400
DOUBLE CEE	(2) H0603	(2) H0300
H.R. / B.U.	(2) H0603	(2) H0300

PARTITION WALL GIRT CONNECTION TO COLD-FORMED PARTITION COLUMN

H0500 BOLT = 1/2" x 1 1/4" A307

H0603 BOLT = 1/2" x 2" A325

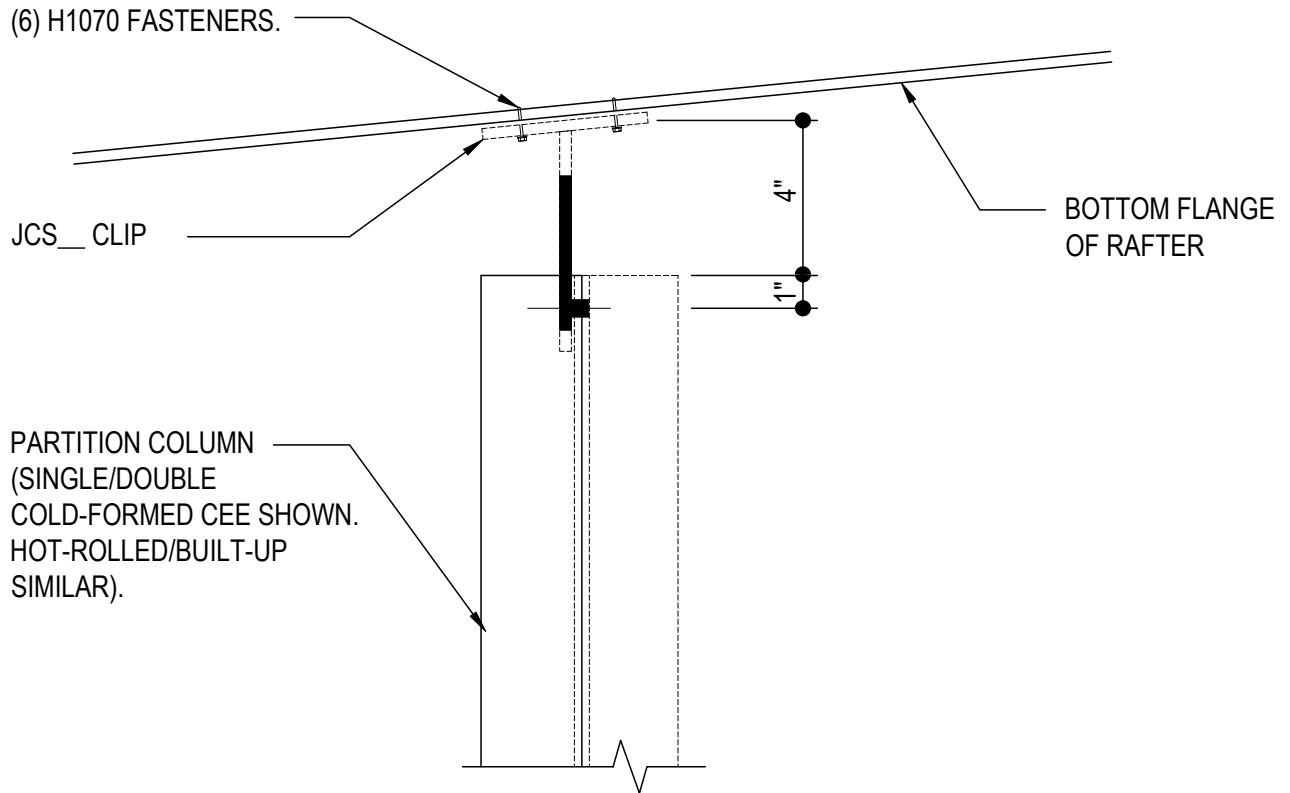
REFERENCE STANDARD WASHER DETAIL FOR TYPICAL WASHER REQUIREMENTS.

CH0080

Detailer Notes:

CH0090 - TRANSVERSE PARTITION COLUMN TO RAFTER CONNECTION

[Download the DWG file by clicking here.](#)



TRANSVERSE PARTITION COLUMN TO RAFTER CONNECTION

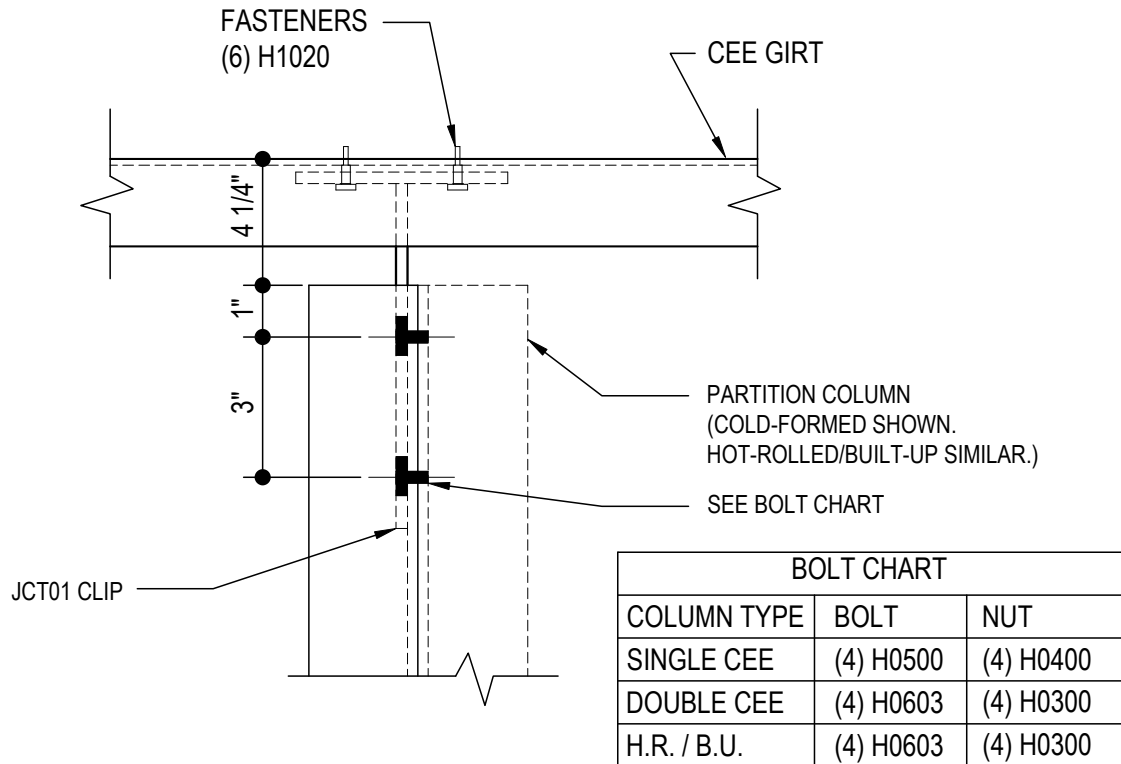
NOTE: USE (2) 1/2" X 2" A325 BOLTS H0603 / NUTS H0300
HAND TIGHTEN AND BURR THREADS.
REFERENCE STANDARD WASHER DETAIL FOR TYPICAL WASHER REQUIREMENTS.

CH0090

Detailer Notes:

CH0100 - PARTITION COLUMN TO TOP CEE GIRT CONNECTION

[Download the DWG file by clicking here.](#)



PARTITION COLUMN TO TOP CEE GIRT CONNECTION

H0500 BOLT = 1/2" x 1 1/4" A307

H0603 BOLT = 1/2" x 2" A325

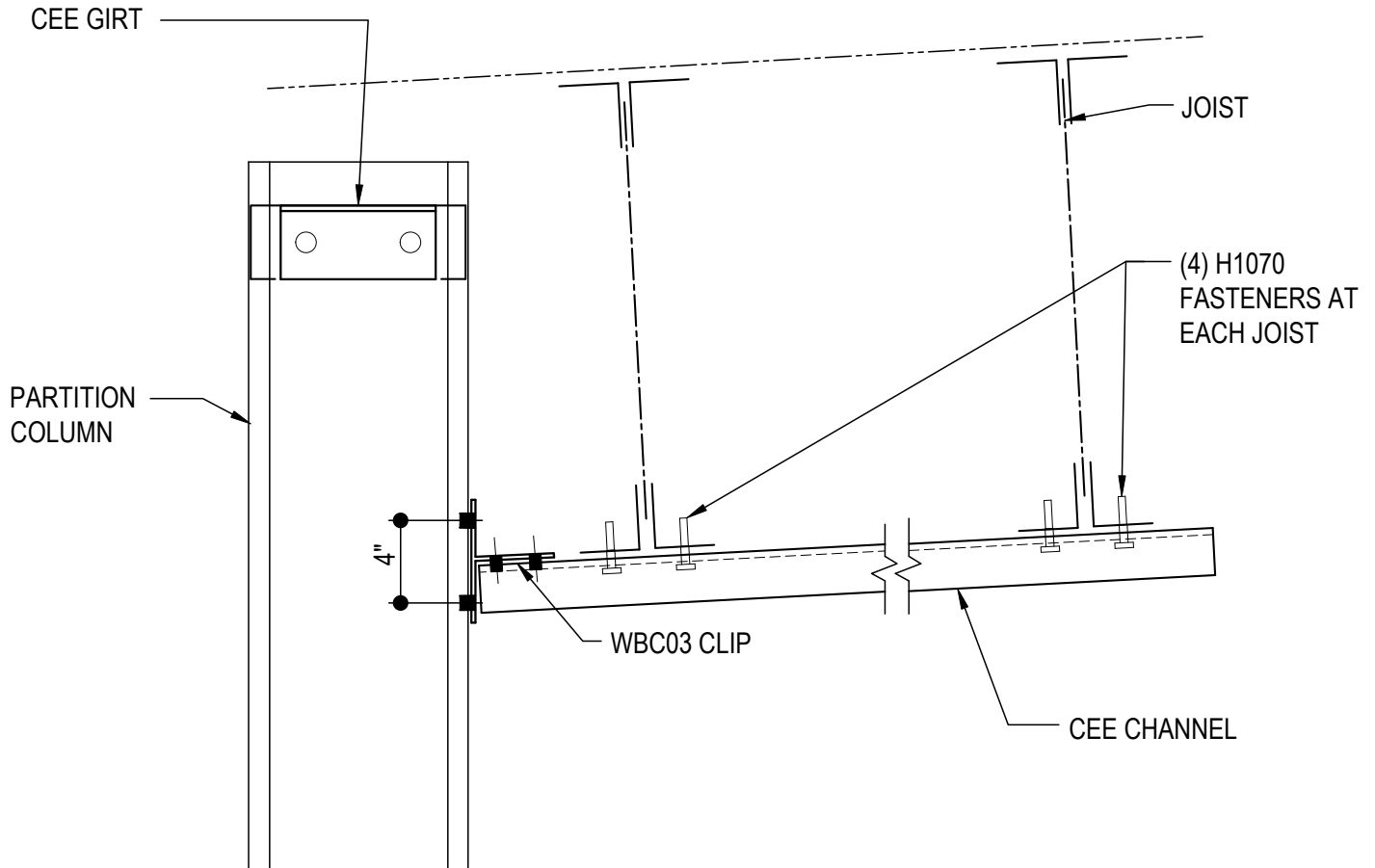
REFERENCE STANDARD WASHER DETAIL FOR TYPICAL WASHER REQUIREMENTS.

CH0100

Detailer Notes:

CH0110 - JOIST STRUT CONNECTION TO PARTITION COLUMN

[Download the DWG file by clicking here.](#)



JOIST STRUT CONNECTION TO PARTITION COLUMN

NOTE: USE (8) 1/2" X 2" A325 BOLTS H0603 / NUTS H0300
REFERENCE STANDARD WASHER DETAIL FOR TYPICAL WASHER REQUIREMENTS.

CH0110

Detailer Notes: